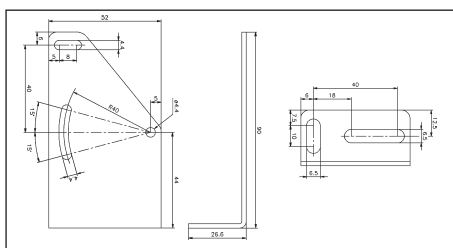


Fotoceller Tilbehør Montagemateriale

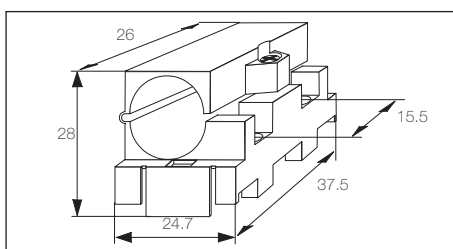
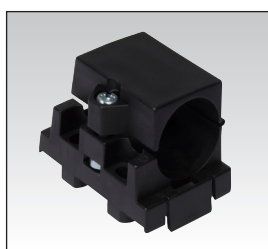


Montagebeslag, langt PM-serien, type MB02



Bestillingsnr.	MB02
Materiale	Stål, galvaniseret

Montagebeslag, type MB18A

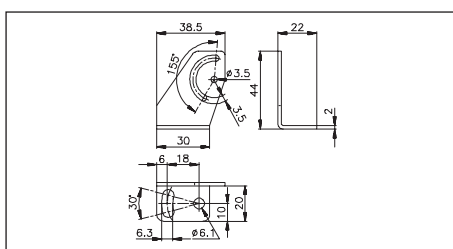


Bestillingsnr.	MB18A
Materiale	POM, sort

Montagebeslag, PA-serien, type APA-2 og APA-3



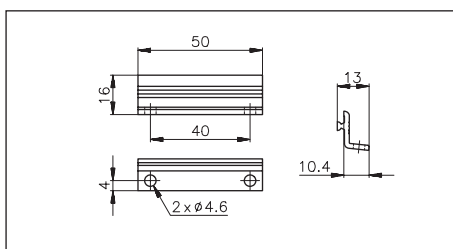
APA-2



Bestillingsnr.	APA-2
Materiale	Stål, sort

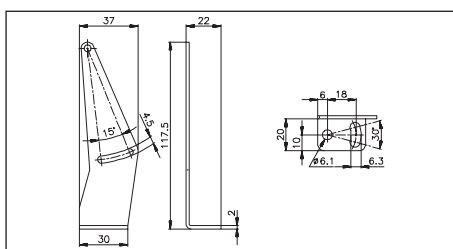


APA-3



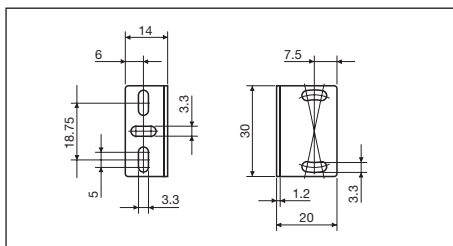
Bestillingsnr.	APA-3
Materiale	Aluminium, anodiseret

Montagebeslag, PB-serien, type APB-1



Bestillingsnr.	APB-1
Materiale	Stål, sort

Montagebeslag, type APD32-MB3



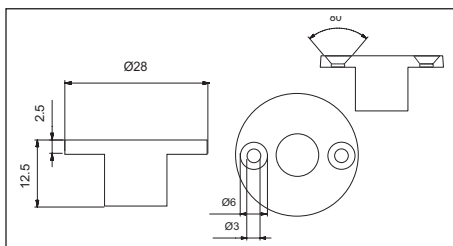
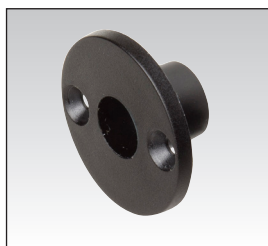
Bestillingsnr.

APD32-MB3

Materiale

Stål, kromatiseret

Montagebeslag, type AMO-MB3



Bestillingsnr.

AMO-MB3

Materiale

PC